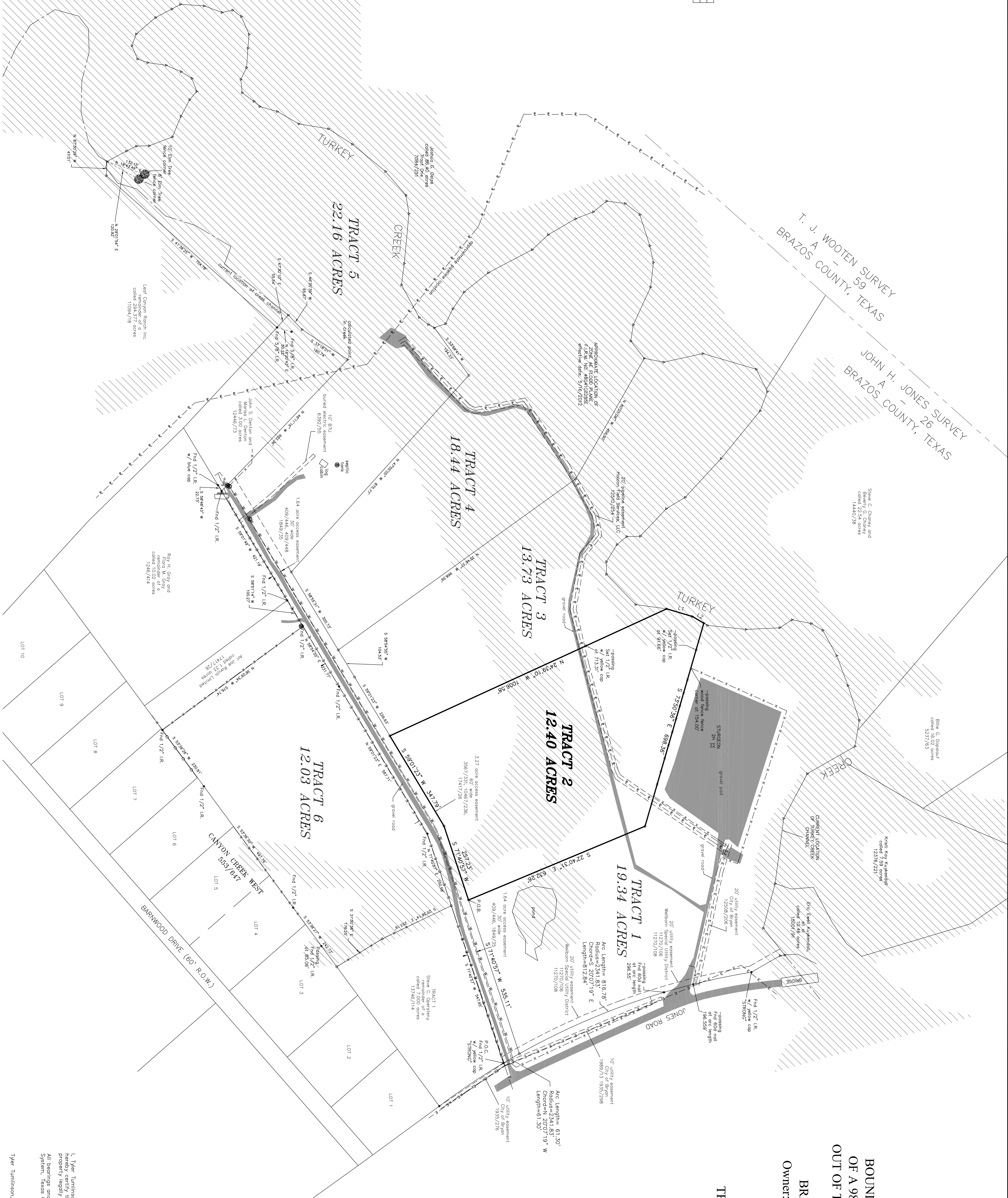


LINE TABLE

LINE	BEARING	DISTANCE
L1	N 16°40'43" E	68.99'
L2	N 58°37'49" E	53.57'



**BOUNDARY DIVISION SURVEY
OF A 98.08 ACRE TRACT OF LAND
OUT OF THE JOHN. H. JONES SURVEY
A-26,
BRAZOS COUNTY, TEXAS
Owner: CC Twelve Investments LLC
Vol. 18956, Pg. 218
O.R.B.C.**

TRACT 2 - 12.40 ACRES

THIS SURVEY WAS PERFORMED WITH THE BENEFIT OF A COMMENT FROM LAWERS TITLE COMPANY OF BRAZOS COUNTY #A 508850

Schedule B - Item 10 easements listed below:

- a. The City of Byam, Texas 86/293 (not platable)
- b. The City of Byam, Texas 86/294 (not platable)
- c. The City of Byam, Texas 86/295 (not platable)
- d. The City of Byam, Texas 86/296 (not platable)
- e. The City of Byam, Texas 86/297 (not platable)
- f. The City of Byam, Texas 86/298 (not platable)
- g. The City of Byam, Texas 86/299 (not platable)
- h. The City of Byam, Texas 86/300 (not platable)
- i. The City of Byam, Texas 86/301 (not platable)
- j. The City of Byam, Texas 86/302 (not platable)
- k. The City of Byam, Texas 86/303 (not platable)
- l. The City of Byam, Texas 86/304 (not platable)
- m. The City of Byam, Texas 86/305 (not platable)
- n. The City of Byam, Texas 86/306 (not platable)
- o. The City of Byam, Texas 86/307 (not platable)
- p. The City of Byam, Texas 86/308 (not platable)
- q. The City of Byam, Texas 86/309 (not platable)
- r. The City of Byam, Texas 86/310 (not platable)
- s. The City of Byam, Texas 86/311 (not platable)
- t. The City of Byam, Texas 86/312 (not platable)
- u. The City of Byam, Texas 86/313 (not platable)
- v. The City of Byam, Texas 86/314 (not platable)
- w. The City of Byam, Texas 86/315 (not platable)
- x. The City of Byam, Texas 86/316 (not platable)
- y. The City of Byam, Texas 86/317 (not platable)
- z. The City of Byam, Texas 86/318 (not platable)
- aa. The City of Byam, Texas 86/319 (not platable)
- ab. The City of Byam, Texas 86/320 (not platable)
- ac. The City of Byam, Texas 86/321 (not platable)
- ad. The City of Byam, Texas 86/322 (not platable)
- ae. The City of Byam, Texas 86/323 (not platable)
- af. The City of Byam, Texas 86/324 (not platable)
- ag. The City of Byam, Texas 86/325 (not platable)
- ah. The City of Byam, Texas 86/326 (not platable)
- ai. The City of Byam, Texas 86/327 (not platable)
- aj. The City of Byam, Texas 86/328 (not platable)
- ak. The City of Byam, Texas 86/329 (not platable)
- al. The City of Byam, Texas 86/330 (not platable)
- am. The City of Byam, Texas 86/331 (not platable)
- an. The City of Byam, Texas 86/332 (not platable)
- ao. The City of Byam, Texas 86/333 (not platable)
- ap. The City of Byam, Texas 86/334 (not platable)
- aq. The City of Byam, Texas 86/335 (not platable)
- ar. The City of Byam, Texas 86/336 (not platable)
- as. The City of Byam, Texas 86/337 (not platable)
- at. The City of Byam, Texas 86/338 (not platable)
- au. The City of Byam, Texas 86/339 (not platable)
- av. The City of Byam, Texas 86/340 (not platable)
- aw. The City of Byam, Texas 86/341 (not platable)
- ax. The City of Byam, Texas 86/342 (not platable)
- ay. The City of Byam, Texas 86/343 (not platable)
- az. The City of Byam, Texas 86/344 (not platable)
- ba. The City of Byam, Texas 86/345 (not platable)
- bb. The City of Byam, Texas 86/346 (not platable)
- bc. The City of Byam, Texas 86/347 (not platable)
- bd. The City of Byam, Texas 86/348 (not platable)
- be. The City of Byam, Texas 86/349 (not platable)
- bf. The City of Byam, Texas 86/350 (not platable)
- bg. The City of Byam, Texas 86/351 (not platable)
- bh. The City of Byam, Texas 86/352 (not platable)
- bi. The City of Byam, Texas 86/353 (not platable)
- bj. The City of Byam, Texas 86/354 (not platable)
- bk. The City of Byam, Texas 86/355 (not platable)
- bl. The City of Byam, Texas 86/356 (not platable)
- bm. The City of Byam, Texas 86/357 (not platable)
- bn. The City of Byam, Texas 86/358 (not platable)
- bo. The City of Byam, Texas 86/359 (not platable)
- bp. The City of Byam, Texas 86/360 (not platable)
- bq. The City of Byam, Texas 86/361 (not platable)
- br. The City of Byam, Texas 86/362 (not platable)
- bs. The City of Byam, Texas 86/363 (not platable)
- bt. The City of Byam, Texas 86/364 (not platable)
- bu. The City of Byam, Texas 86/365 (not platable)
- bv. The City of Byam, Texas 86/366 (not platable)
- bw. The City of Byam, Texas 86/367 (not platable)
- bx. The City of Byam, Texas 86/368 (not platable)
- by. The City of Byam, Texas 86/369 (not platable)
- bz. The City of Byam, Texas 86/370 (not platable)
- ca. The City of Byam, Texas 86/371 (not platable)
- cb. The City of Byam, Texas 86/372 (not platable)
- cc. The City of Byam, Texas 86/373 (not platable)
- cd. The City of Byam, Texas 86/374 (not platable)
- ce. The City of Byam, Texas 86/375 (not platable)
- cf. The City of Byam, Texas 86/376 (not platable)
- cg. The City of Byam, Texas 86/377 (not platable)
- ch. The City of Byam, Texas 86/378 (not platable)
- ci. The City of Byam, Texas 86/379 (not platable)
- cj. The City of Byam, Texas 86/380 (not platable)
- ck. The City of Byam, Texas 86/381 (not platable)
- cl. The City of Byam, Texas 86/382 (not platable)
- cm. The City of Byam, Texas 86/383 (not platable)
- cn. The City of Byam, Texas 86/384 (not platable)
- co. The City of Byam, Texas 86/385 (not platable)
- cp. The City of Byam, Texas 86/386 (not platable)
- cq. The City of Byam, Texas 86/387 (not platable)
- cr. The City of Byam, Texas 86/388 (not platable)
- cs. The City of Byam, Texas 86/389 (not platable)
- ct. The City of Byam, Texas 86/390 (not platable)
- cu. The City of Byam, Texas 86/391 (not platable)
- cv. The City of Byam, Texas 86/392 (not platable)
- cw. The City of Byam, Texas 86/393 (not platable)
- cx. The City of Byam, Texas 86/394 (not platable)
- cy. The City of Byam, Texas 86/395 (not platable)
- cz. The City of Byam, Texas 86/396 (not platable)
- ca. The City of Byam, Texas 86/397 (not platable)
- cb. The City of Byam, Texas 86/398 (not platable)
- cc. The City of Byam, Texas 86/399 (not platable)
- cd. The City of Byam, Texas 86/400 (not platable)

LEGEND

These easement systems will be found in the drawing:

- Found iron rod (blue metal)
- Set 1/2" iron rod w/ yellow cap
- ⊙ Calculated point in center of creek
- ⊙ spot line
- ⊙ overlaid electric line
- wire fence
- DEED LINE
- EASEMENT
- survey line
- pipeline
- water line
- overlaid telephone line

I, Tyler Tumlinson, Registered Professional Land Surveyor, do hereby certify that the above described ground is the property legally described herein, and is correct. All bearings and distances are based on State Plane Coordinate System, Texas Central Zone, NAD 1983.

Tyler Tumlinson, R.P.L.S. No 6410 February 28, 2024

