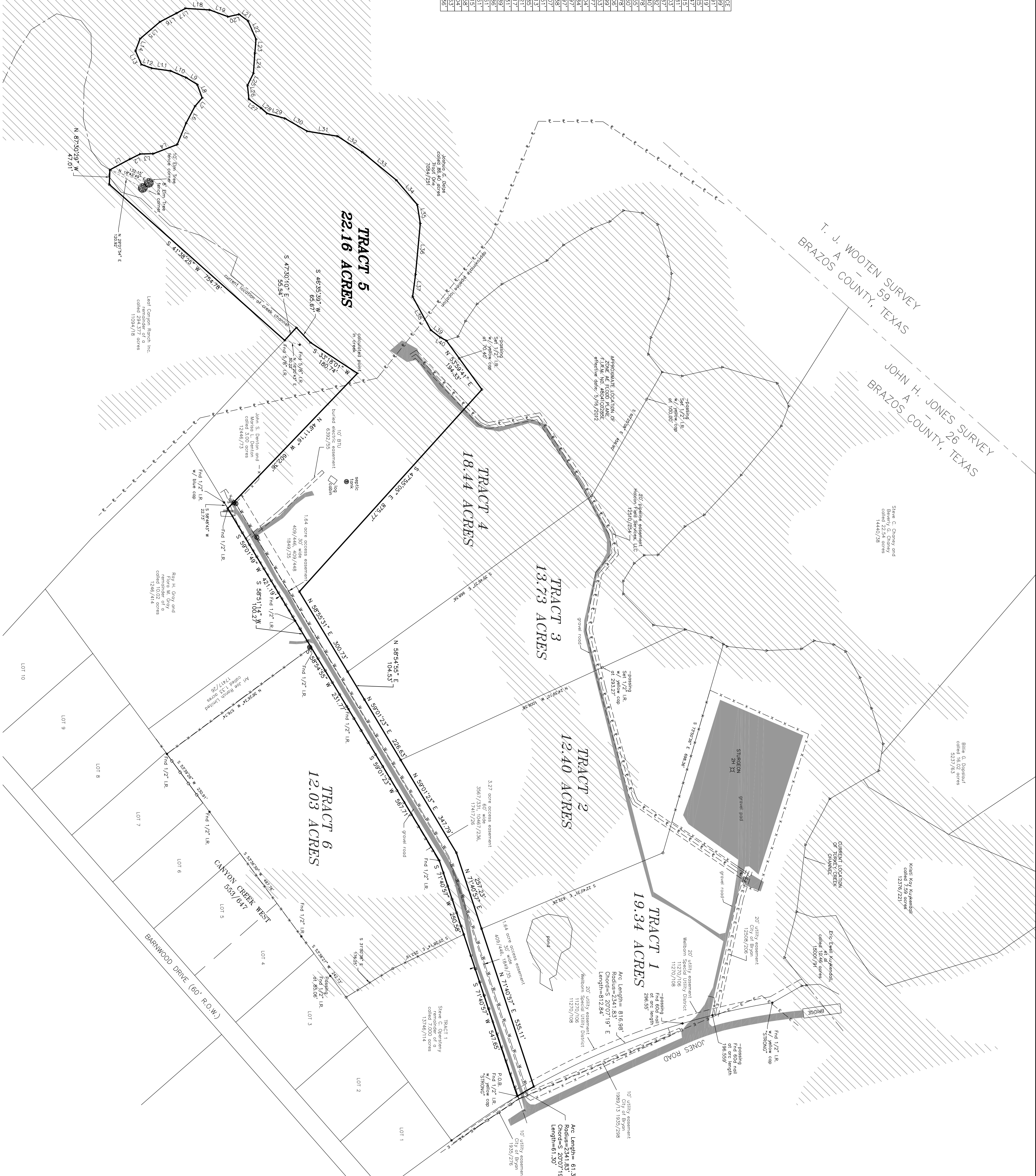


LINE TABLE

LINE	BEARING	DISTANCE
L1	N 28°12'41" W	72.89
L2	N 28°12'15" W	38.91
L3	N 28°12'15" W	82.25
L4	N 21°00'06" W	82.25
L5	N 67°30'45" W	73.47
L6	N 62°17'44" W	62.15
L7	N 49°32'24" W	35.81
L8	S 31°31'53" W	46.52
L9	S 23°26'49" W	53.82
L10	S 08°01'13" W	61.40
L11	S 19°58'18" W	35.78
L12	S 65°32'25" W	41.25
L13	N 40°24'50" W	83.78
L14	N 27°39'58" W	61.06
L15	N 27°39'58" W	31.99
L16	N 03°33'31" E	78.53
L17	N 03°33'31" E	78.53
L18	N 36°37'05" E	35.84
L19	N 65°18'53" E	63.97
L20	N 65°18'53" E	45.97
L21	S 85°12'14" E	45.97
L22	S 85°12'14" E	45.97
L23	S 85°12'14" E	45.97
L24	S 85°12'14" E	45.97
L25	S 85°12'14" E	45.97
L26	S 85°12'14" E	45.97
L27	S 85°12'14" E	45.97
L28	N 41°02'02" E	28.85
L29	N 55°44'08" E	80.71
L30	N 55°44'08" E	80.71
L31	N 09°20'43" E	99.31
L32	N 32°59'22" E	93.89
L33	N 39°23'51" E	141.86
L34	N 49°20'58" E	103.61
L35	N 62°40'00" E	165.15
L36	S 82°36'09" E	71.58
L37	S 82°36'09" E	122.04
L38	N 61°29'09" E	38.63
L39	N 39°01'15" E	38.63
L40	N 27°41'37" E	22.38



BOUNDARY DIVISION SURVEY
 OF A 98.08 ACRE TRACT OF LAND
 OUT OF THE JOHN. H. JONES SURVEY
 A-26,
 BRAZOS COUNTY, TEXAS
 Owner: CC Twelve Investments LLC
 Vol. 18956, Pg. 218
 O.R.B.C.

TRACT 5 - 22.16 ACRES

THIS SURVEY WAS PERFORMED WITH THE BENEFIT OF A COMMENT FROM LAWYERS TITLE COMPANY OF BRAZOS COUNTY #258880

Schedule B - Item 10 easement listed below:

- h. The City of Byam, Texas 86/293 (not platable)
- i. The City of Byam, Texas 86/293 (not platable)
- j. The City of Byam, Texas 86/293 (not platable)
- k. The City of Byam, Texas 86/293 (not platable)
- l. The City of Byam, Texas 86/293 (not platable)
- m. The City of Byam, Texas 86/293 (not platable)
- n. The City of Byam, Texas 86/293 (not platable)
- o. The City of Byam, Texas 86/293 (not platable)
- p. The City of Byam, Texas 86/293 (not platable)
- q. The City of Byam, Texas 86/293 (not platable)
- r. The City of Byam, Texas 86/293 (not platable)
- s. The City of Byam, Texas 86/293 (not platable)
- t. The City of Byam, Texas 86/293 (not platable)
- u. The City of Byam, Texas 86/293 (not platable)
- v. The City of Byam, Texas 86/293 (not platable)
- w. The City of Byam, Texas 86/293 (not platable)
- x. The City of Byam, Texas 86/293 (not platable)
- y. The City of Byam, Texas 86/293 (not platable)
- z. The City of Byam, Texas 86/293 (not platable)

LEGEND

These easement systems will be found in the drawing:

- Found from red (lake metal)
- Set 1/2" from red w/ yellow cap
- Observed point in center of creek
- Spot line
- Overlaid electric line
- wire fence
- easement
- easement
- easement
- easement
- water line
- overlaid telephone line

I, Tyler Tumlinson, Registered Professional Land Surveyor, do hereby certify that the above described grounds of the property legally described herein, and is correct.

All bearings and distances are based on State Plane Coordinate System, Texas Central Zone, NAD 1983.

Tyler Tumlinson, R.P.L.S. No 6410 February 28, 2024

