

T. J. A. WOOTEN SURVEY  
BRAZOS COUNTY, TEXAS

JOHN H. JONES SURVEY  
BRAZOS COUNTY, TEXAS

Steve C. Osprey and  
Beverly S. Osprey  
14440/78

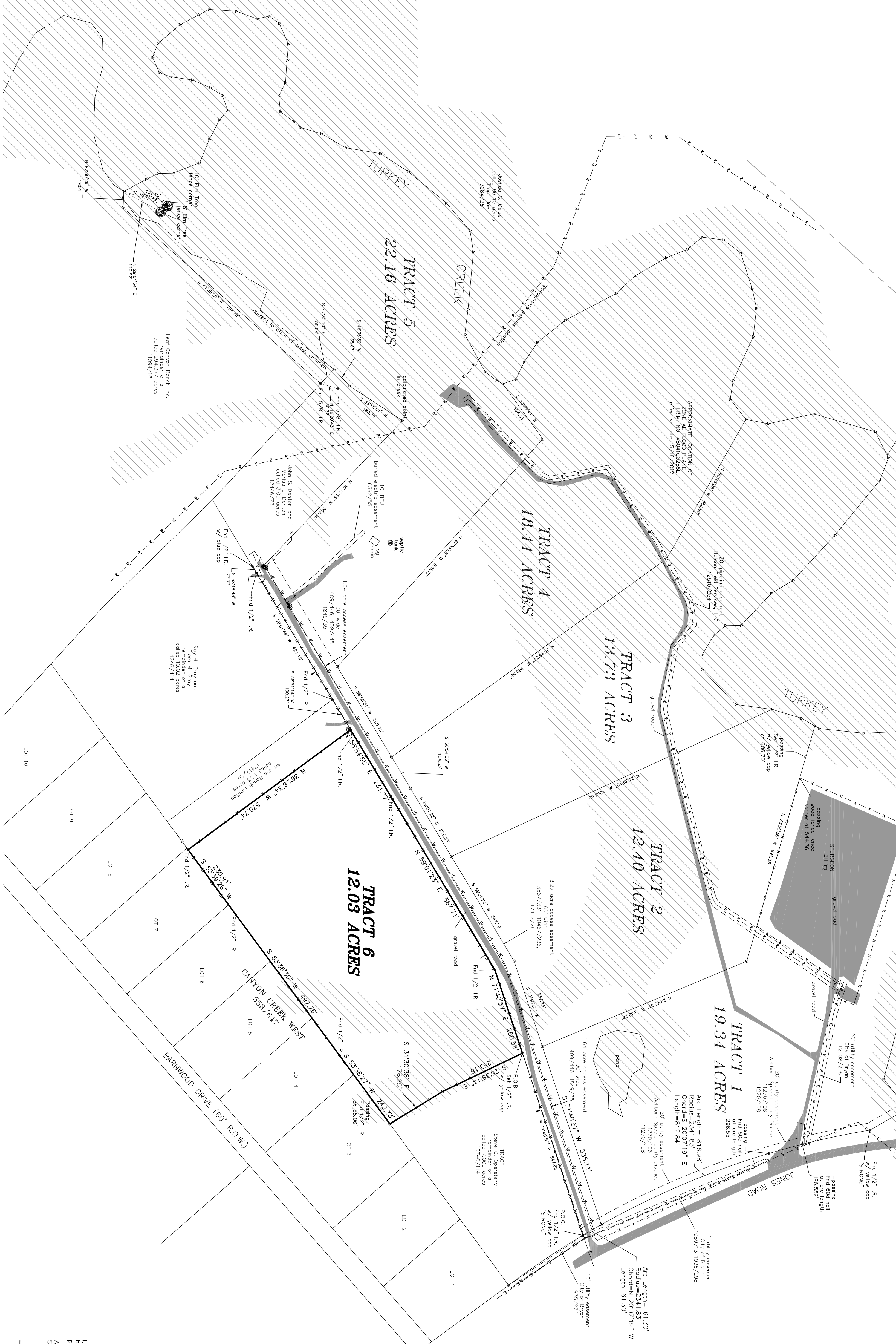
Billie C. Osprey  
called 10.02 acres  
1320/78

Keith Koy Kuykendall  
called 1.29 acres  
1320/78

Eric Ewald Kuykendall  
called 4.00 acres  
1320/78

**BOUNDARY DIVISION SURVEY  
OF A 98.08 ACRE TRACT OF LAND  
OUT OF THE JOHN. H. JONES SURVEY**  
A-26,  
BRAZOS COUNTY, TEXAS  
Owner: CC Twelve Investments LLC  
Vol. 18956, Pg. 218  
O.R.B.C.

TRACT 6 - 12.03 ACRES



THIS SURVEY WAS PERFORMED WITH THE BENEFIT OF A COMMENT FROM LAWYERS TITLE COMPANY OF BRAZOS COUNTY OF # 58880

Schedule B - Item 10 easements listed below:

- h. The City of Byam, Texas 86/293 (not platable)
- i. The City of Byam, Texas 86/294 (not platable)
- j. The City of Byam, Texas 86/295 (not platable)
- k. The City of Byam, Texas 86/296 (not platable)
- l. The City of Byam, Texas 86/297 (not platable)
- m. The City of Byam, Texas 86/298 (not platable)
- n. The City of Byam, Texas 86/299 (not platable)
- o. The City of Byam, Texas 86/300 (not platable)
- p. The City of Byam, Texas 86/301 (not platable)
- q. The City of Byam, Texas 86/302 (not platable)
- r. The City of Byam, Texas 86/303 (not platable)
- s. The City of Byam, Texas 86/304 (not platable)
- t. The City of Byam, Texas 86/305 (not platable)
- u. The City of Byam, Texas 86/306 (not platable)
- v. The City of Byam, Texas 86/307 (not platable)
- w. The City of Byam, Texas 86/308 (not platable)
- x. The City of Byam, Texas 86/309 (not platable)
- y. The City of Byam, Texas 86/310 (not platable)
- z. The City of Byam, Texas 86/311 (not platable)
- aa. The City of Byam, Texas 86/312 (not platable)
- ab. The City of Byam, Texas 86/313 (not platable)
- ac. The City of Byam, Texas 86/314 (not platable)
- ad. The City of Byam, Texas 86/315 (not platable)
- ae. The City of Byam, Texas 86/316 (not platable)
- af. The City of Byam, Texas 86/317 (not platable)
- ag. The City of Byam, Texas 86/318 (not platable)
- ah. The City of Byam, Texas 86/319 (not platable)
- ai. The City of Byam, Texas 86/320 (not platable)
- aj. The City of Byam, Texas 86/321 (not platable)
- ak. The City of Byam, Texas 86/322 (not platable)
- al. The City of Byam, Texas 86/323 (not platable)
- am. The City of Byam, Texas 86/324 (not platable)
- an. The City of Byam, Texas 86/325 (not platable)
- ao. The City of Byam, Texas 86/326 (not platable)
- ap. The City of Byam, Texas 86/327 (not platable)
- aq. The City of Byam, Texas 86/328 (not platable)
- ar. The City of Byam, Texas 86/329 (not platable)
- as. The City of Byam, Texas 86/330 (not platable)
- at. The City of Byam, Texas 86/331 (not platable)
- au. The City of Byam, Texas 86/332 (not platable)
- av. The City of Byam, Texas 86/333 (not platable)
- aw. The City of Byam, Texas 86/334 (not platable)
- ax. The City of Byam, Texas 86/335 (not platable)
- ay. The City of Byam, Texas 86/336 (not platable)
- az. The City of Byam, Texas 86/337 (not platable)
- ba. The City of Byam, Texas 86/338 (not platable)
- bb. The City of Byam, Texas 86/339 (not platable)
- bc. The City of Byam, Texas 86/340 (not platable)
- bd. The City of Byam, Texas 86/341 (not platable)
- be. The City of Byam, Texas 86/342 (not platable)
- bf. The City of Byam, Texas 86/343 (not platable)
- bg. The City of Byam, Texas 86/344 (not platable)
- bh. The City of Byam, Texas 86/345 (not platable)
- bi. The City of Byam, Texas 86/346 (not platable)
- bj. The City of Byam, Texas 86/347 (not platable)
- bk. The City of Byam, Texas 86/348 (not platable)
- bl. The City of Byam, Texas 86/349 (not platable)
- bm. The City of Byam, Texas 86/350 (not platable)
- bn. The City of Byam, Texas 86/351 (not platable)
- bo. The City of Byam, Texas 86/352 (not platable)
- bp. The City of Byam, Texas 86/353 (not platable)
- bq. The City of Byam, Texas 86/354 (not platable)
- br. The City of Byam, Texas 86/355 (not platable)
- bs. The City of Byam, Texas 86/356 (not platable)
- bt. The City of Byam, Texas 86/357 (not platable)
- bu. The City of Byam, Texas 86/358 (not platable)
- bv. The City of Byam, Texas 86/359 (not platable)
- bw. The City of Byam, Texas 86/360 (not platable)
- bx. The City of Byam, Texas 86/361 (not platable)
- by. The City of Byam, Texas 86/362 (not platable)
- bz. The City of Byam, Texas 86/363 (not platable)
- ca. The City of Byam, Texas 86/364 (not platable)
- cb. The City of Byam, Texas 86/365 (not platable)
- cc. The City of Byam, Texas 86/366 (not platable)
- cd. The City of Byam, Texas 86/367 (not platable)
- ce. The City of Byam, Texas 86/368 (not platable)
- cf. The City of Byam, Texas 86/369 (not platable)
- cg. The City of Byam, Texas 86/370 (not platable)
- ch. The City of Byam, Texas 86/371 (not platable)
- ci. The City of Byam, Texas 86/372 (not platable)
- cj. The City of Byam, Texas 86/373 (not platable)
- ck. The City of Byam, Texas 86/374 (not platable)
- cl. The City of Byam, Texas 86/375 (not platable)
- cm. The City of Byam, Texas 86/376 (not platable)
- cn. The City of Byam, Texas 86/377 (not platable)
- co. The City of Byam, Texas 86/378 (not platable)
- cp. The City of Byam, Texas 86/379 (not platable)
- cq. The City of Byam, Texas 86/380 (not platable)
- cr. The City of Byam, Texas 86/381 (not platable)
- cs. The City of Byam, Texas 86/382 (not platable)
- ct. The City of Byam, Texas 86/383 (not platable)
- cu. The City of Byam, Texas 86/384 (not platable)
- cv. The City of Byam, Texas 86/385 (not platable)
- cw. The City of Byam, Texas 86/386 (not platable)
- cx. The City of Byam, Texas 86/387 (not platable)
- cy. The City of Byam, Texas 86/388 (not platable)
- cz. The City of Byam, Texas 86/389 (not platable)
- ca. The City of Byam, Texas 86/390 (not platable)
- cb. The City of Byam, Texas 86/391 (not platable)
- cc. The City of Byam, Texas 86/392 (not platable)
- cd. The City of Byam, Texas 86/393 (not platable)
- ce. The City of Byam, Texas 86/394 (not platable)
- cf. The City of Byam, Texas 86/395 (not platable)
- cg. The City of Byam, Texas 86/396 (not platable)
- ch. The City of Byam, Texas 86/397 (not platable)
- ci. The City of Byam, Texas 86/398 (not platable)
- cj. The City of Byam, Texas 86/399 (not platable)
- ck. The City of Byam, Texas 86/400 (not platable)

LEGEND

•	These monument symbols will be found in the drawing.
○	Found iron rod (lake metal)
○	Set 1/2" iron rod w/ yellow cap
○	Calculated point in center of creek
○	Spot line
○	overhead electric line
—	white fence
—	DEED LINE
—	EASEMENT
—	survey line
—	pipeline
—	water line
—	overhead telephone line

I, Tyler Tomlinson, Registered Professional Land Surveyor, do hereby certify that the foregoing is a true and correct copy of the property legally described herein, and is correct. All bearings and distances are based on State Plane Coordinate System, Texas Central Zone, NAD 1983.

Tyler Tomlinson, R.P.L.S. No 6410 February 28, 2024



**TOMLINSON LAND SURVEYING**  
1353 AMERICAN OVERLOOKS CIRCL  
COLLEGE STATION, TEXAS 77845  
254-491-6077  
T&E P.L.S. FIRM NO. 1009385

PROJECT:	03304
DRAWN BY:	T. TOMLINSON
CHECKED BY:	T. TOMLINSON
DATE:	2-28-2024
SCALE:	AS SHOWN
PROJECT:	03304
DRAWN BY:	T. TOMLINSON
CHECKED BY:	T. TOMLINSON
DATE:	2-28-2024
SCALE:	AS SHOWN